

Understanding Employment For Students With Low Needs for Supports

Samantha Goldfarb

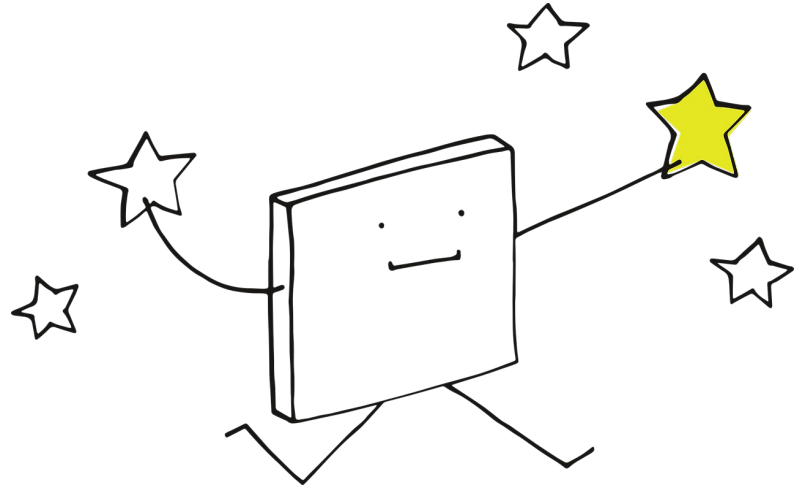
Director of Training and Consultation Services

The Arc of New Jersey

A dark blue diagonal graphic that starts from the bottom left corner and extends towards the top right corner, creating a triangular shape on the right side of the slide.

What we want for them:

- **Support**
 - To meet their needs
 - To set them up for success
- **Independence**
 - To give them room to grow
 - To not over-support
- **Choice**
 - For them to define “a good life”
 - For them to pursue their dreams

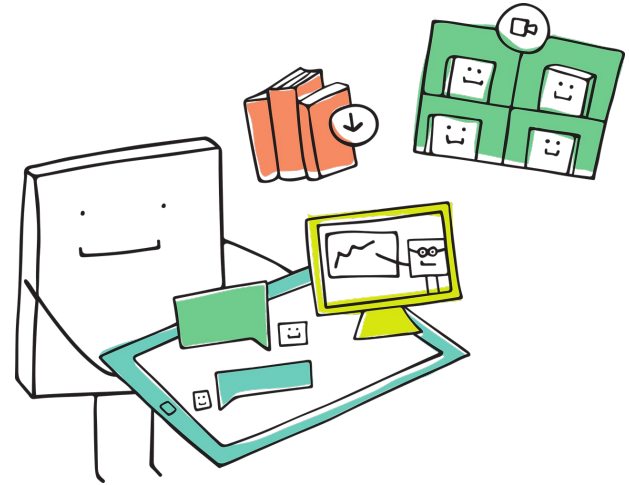


One way to achieve this:

Employment can help them lead the life they deserve.

There are ways to access employment that is:

- **Competitive**
 - Setting is not disability-specific
- **Integrative**
 - Position is available in the community
- **Accessible**
 - Support with independence and choice

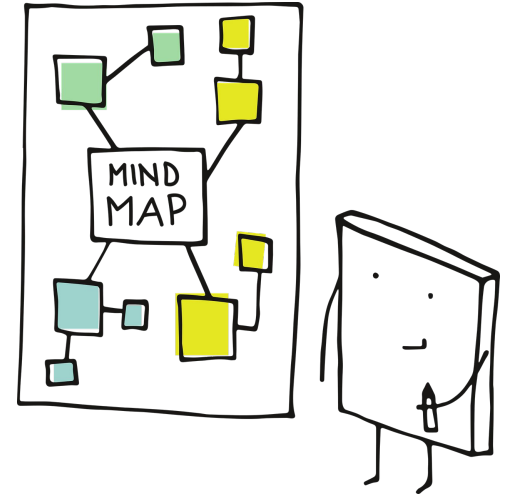


Standard Employment Supports

- **Pre-Employment Transition Services (Pre-ETS):**

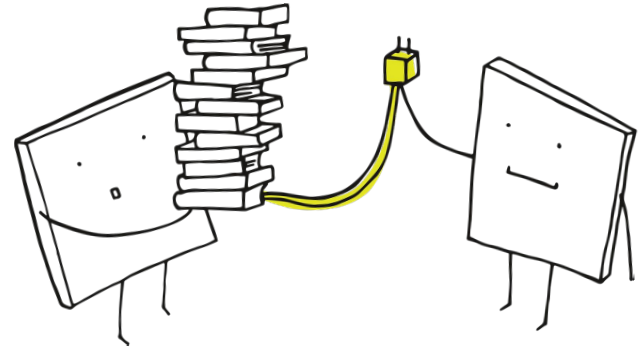
Career-readiness practice and support

- Available from age 14
 1. Job exploration counseling
 2. Work-based learning experiences
 3. Workplace readiness training
 4. Counseling on opportunities for transition/post-secondary programs
 5. Instruction in self-advocacy, including peer-mentoring



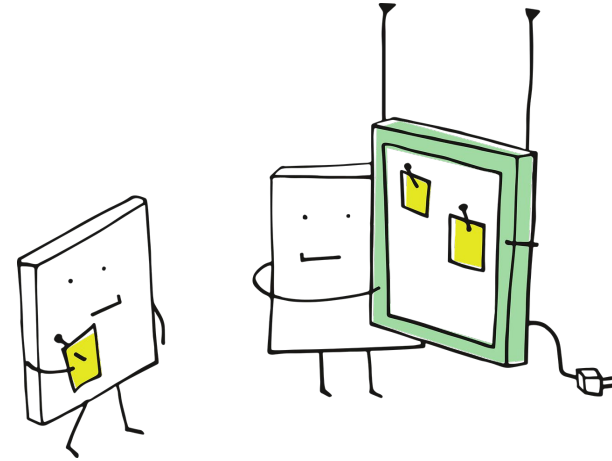
Standard Employment Supports

- **Pre-Placement Services:** Assistance finding a job, passing interviews etc.
 - *From referral to accepting a job offer*
- **Supported Employment (SE):** Intensive assistance with learning job tasks and skills
 - *From job orientation to relative job stability*
- **Long-Term Follow-Along (LTFA):** Periodic check-ins and on-the-job assistance
 - *From relative job stability to independence*



Other Employment Supports

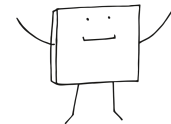
- **Community-Based Work Evaluation (CBWE):**
Practice-employment on different job sites to identify abilities and interests
- **Customized Employment (CE):** Assistance creating a customized job (including self-employment)
- **Project SEARCH:** Internship program combining career-readiness education and job training



DVRS Introduction

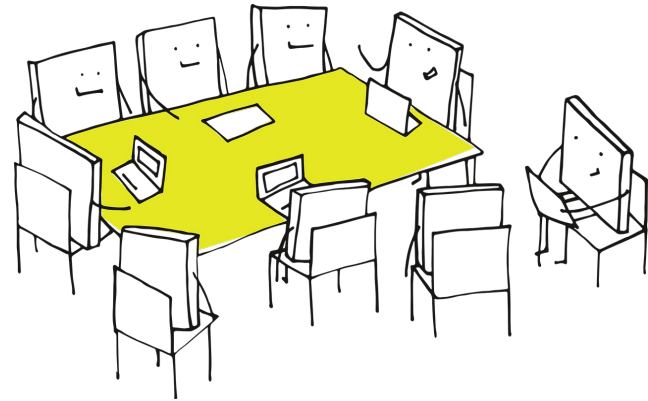
DVRS (NJDVRS, DVR): New Jersey Division of Vocational Rehabilitation Services

- For those who need employment supports but do not qualify for other programs (DDD or CBVI)
 - Disability posing substantial impairment to employment
 - Requires assistance to obtain and/or maintain employment



DVRS and Schools

- Schools can refer students to DVRS
 - *Online referral is available to anyone on the DVRS website or by calling your local office*
 - *Parents*
 - *Individuals*
- Schools are provided with a DVRS liaison (a counselor from the local office)
 - *Ask your school about DVRS referral and available options!*



Questions?

Thank you!

Samantha Goldfarb

*Director of Training
and Consultation
Services (TCS)*

(732) 748-8434

sgoldfarb@arcnj.org

